



# ANAND COMMERCE COLLEGE

(Managed by Shri Ramkrishna Seva Mandal)

Opp. Town Hall. ANAND – 388 001. Gujarat State, India.

Ph.: (02692) (O) 250769, 651559

NAAC ACCREDITED “A” GRADE (3.04 CGPA)

ISO 9001:2015

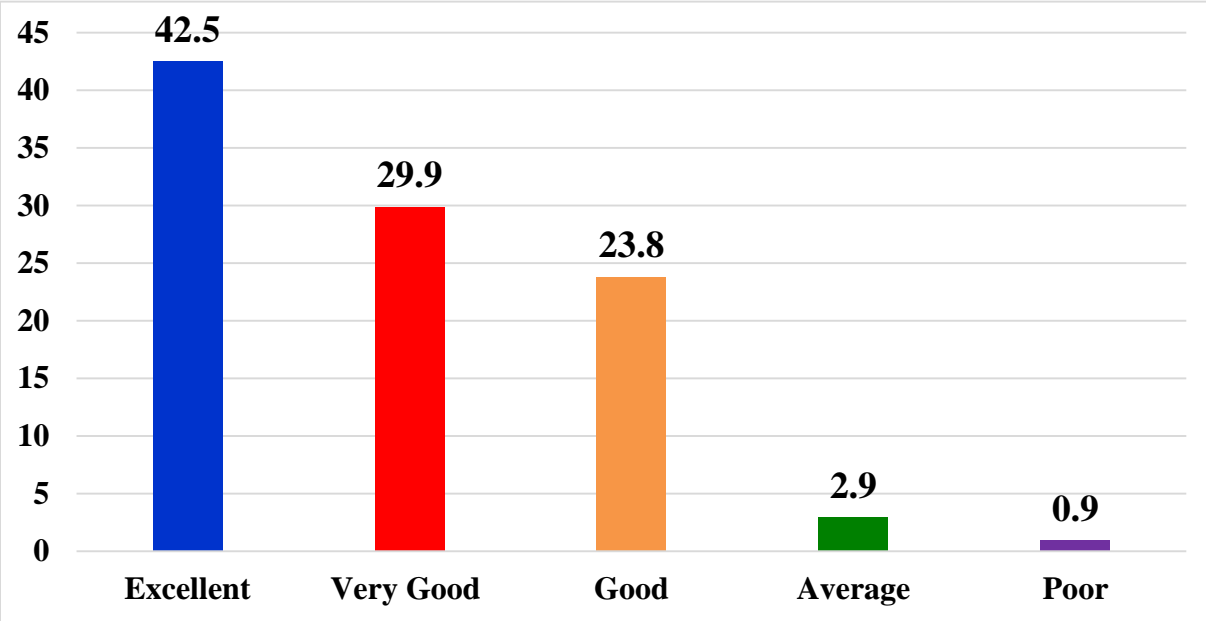
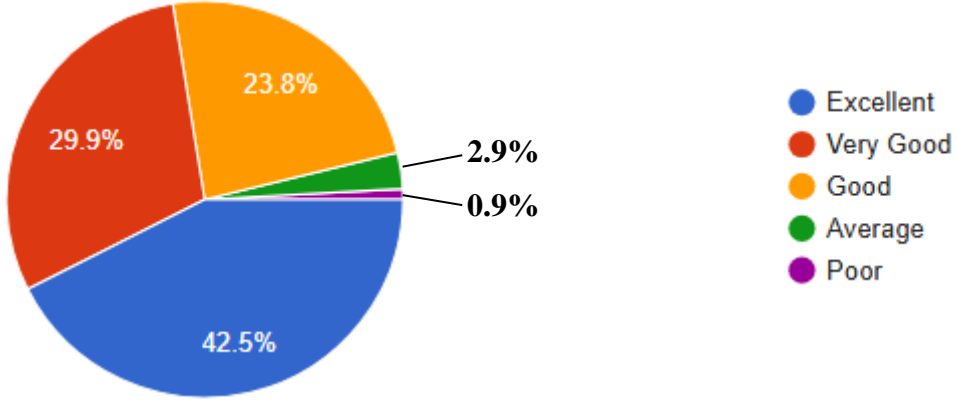
**Dr. V.M. Vanar**  
Principal

## FEEDBACK REPORT OF PARENTS 2023-24

## 1. Admission procedure. (પ્રવેશ પ્રક્રિયા.)

All values are in percentage (%)

Response :- 1157

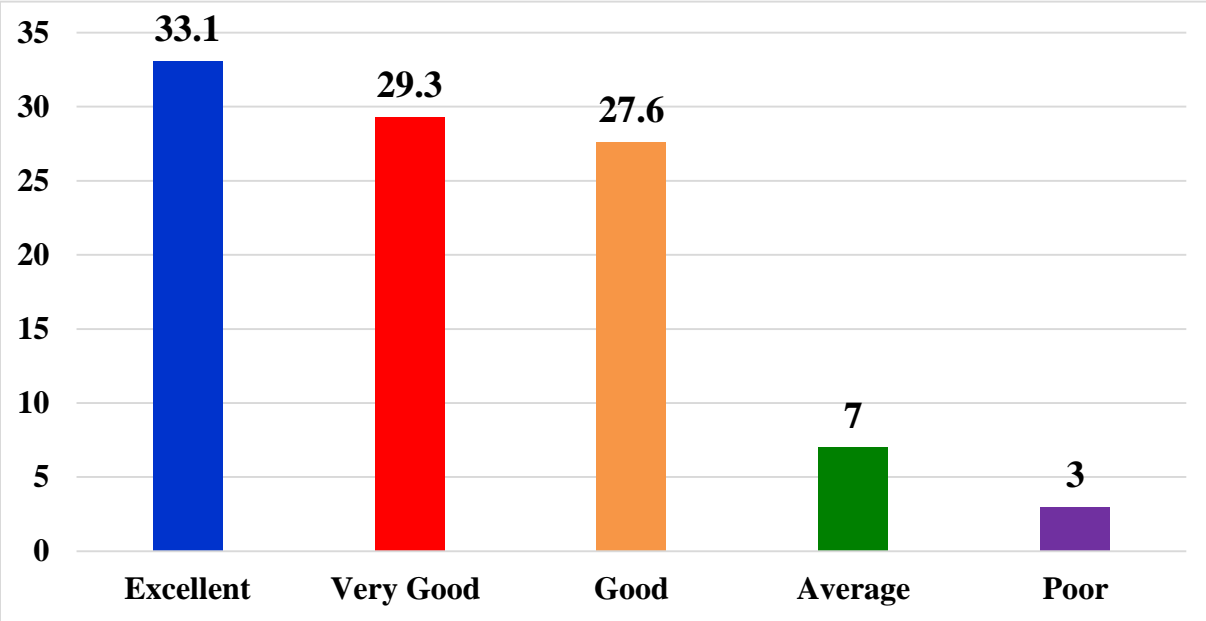
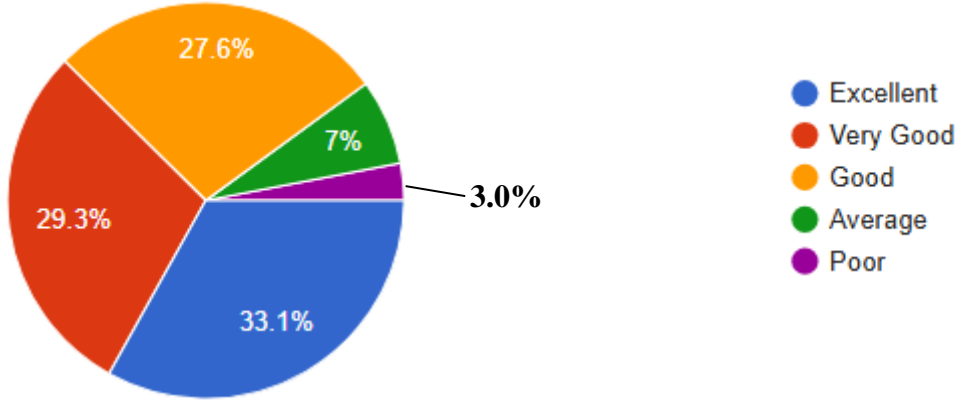


Ans	Total	Percentage
Excellent	492	42.5%
Very Good	346	29.9%
Good	275	23.8%
Average	34	2.9%
Poor	10	0.9%

## 2. Infrastructure and lab facility. (ઈન્ફ્રાસ્ટ્રક્ચર અને લેબ સુવિધા.)

All values are in percentage (%)

Response :- 1157

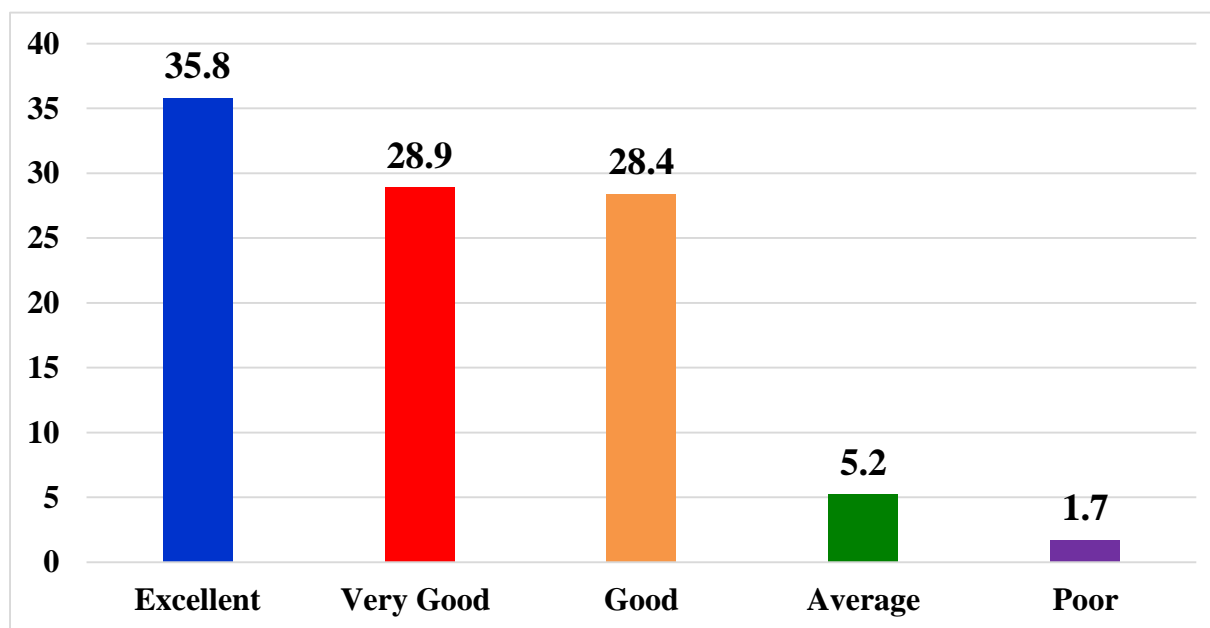
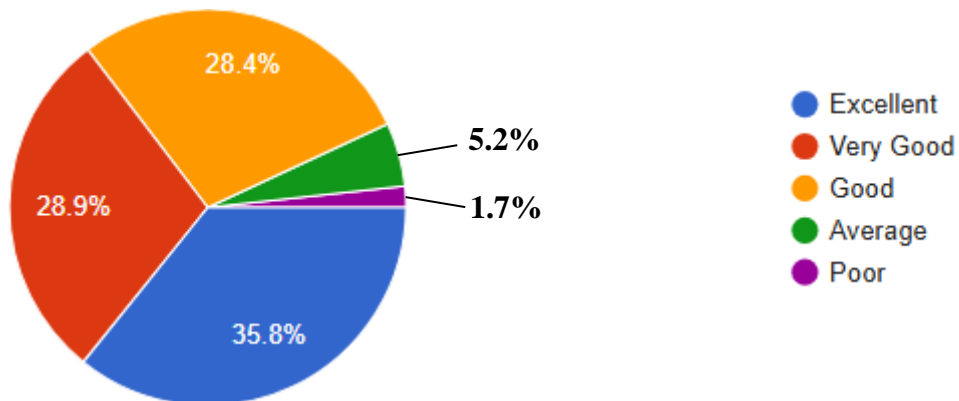


Ans	Total	Percentage
Excellent	383	33.1%
Very Good	339	29.3%
Good	319	27.6%
Average	81	7.0%
Poor	35	3.0%

### 3. College Environment observed by you and your Ward.

All values are in percentage (%)

Response :- 1157

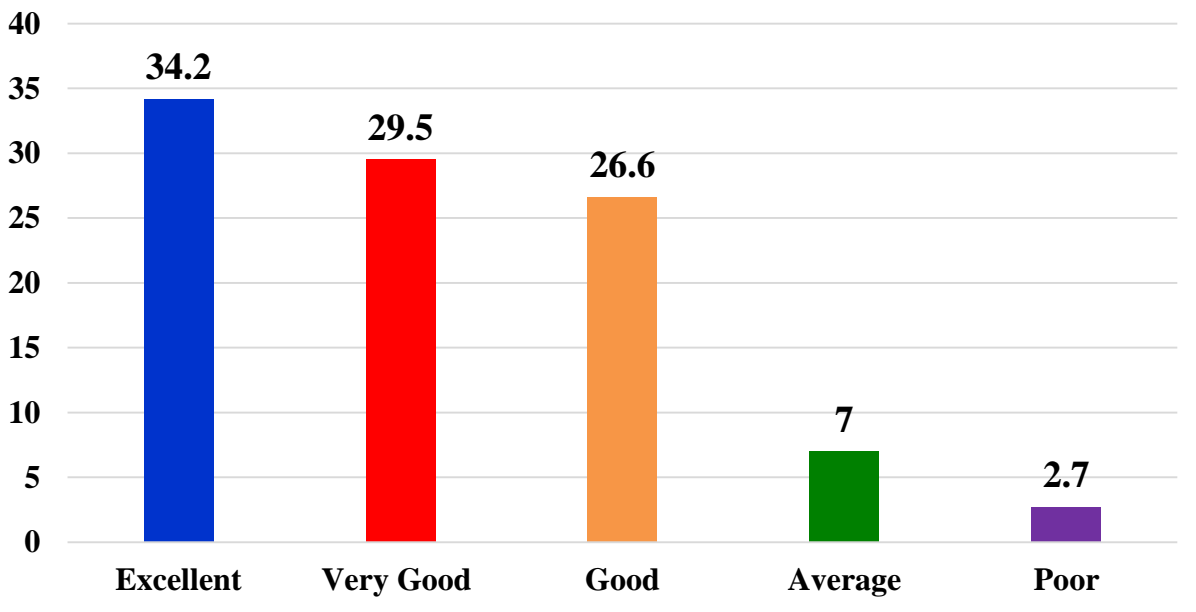
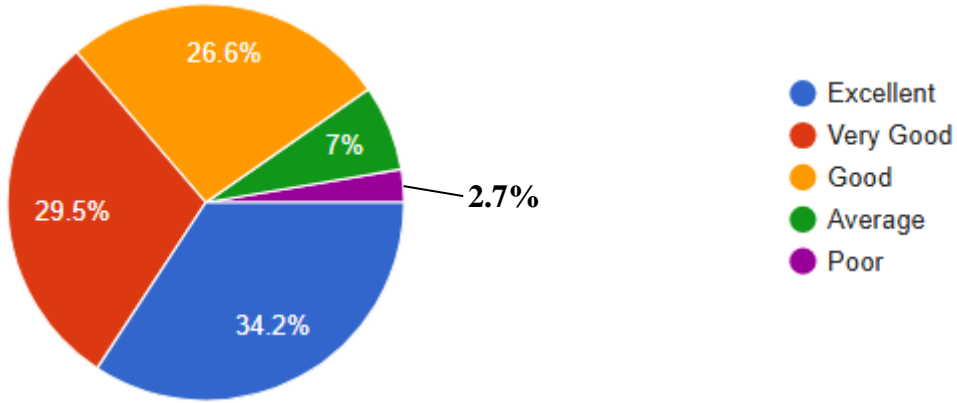


Ans	Total	Percentage
Excellent	414	35.8%
Very Good	334	28.9%
Good	329	28.4%
Average	60	5.2%
Poor	20	1.7%

#### 4. Library. (ପୁସ୍ତକାଳୟ.).

All values are in percentage (%)

Response :- 1157

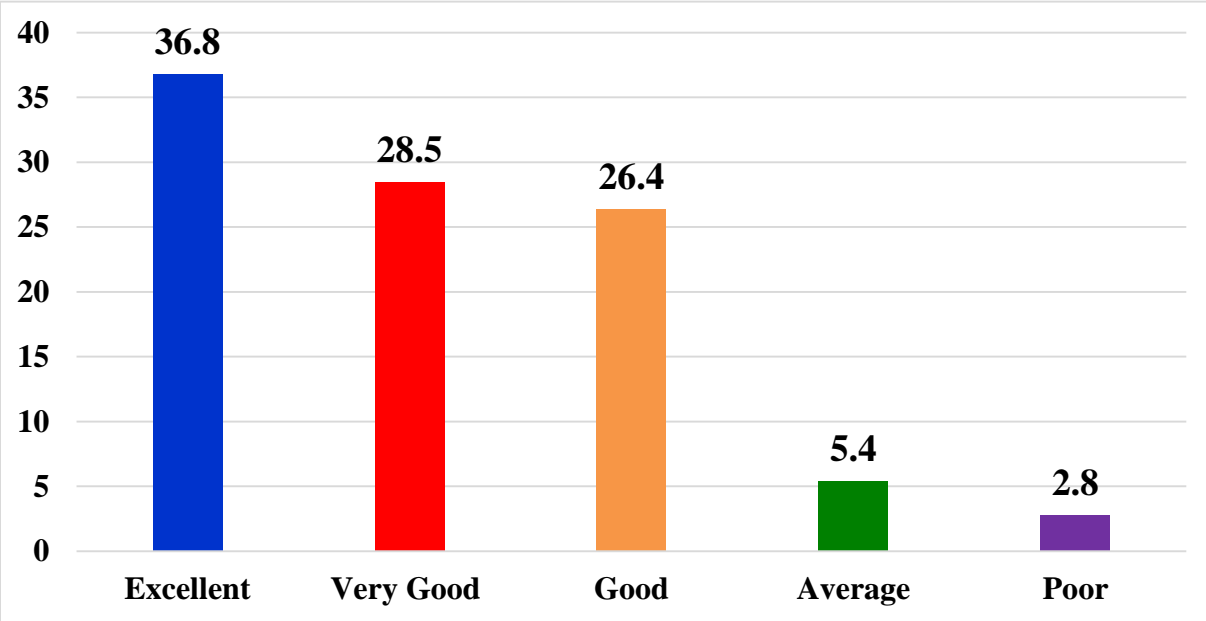
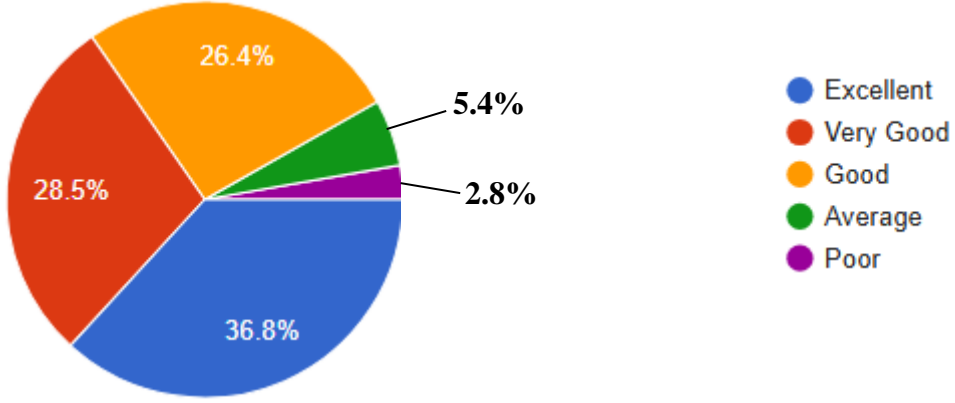


Ans	Total	Percentage
Excellent	396	34.2%
Very Good	341	29.5%
Good	308	26.6%
Average	81	7.0%
Poor	31	2.7%

## 5. Sports and cultural activities. (રમતગમત અને સાંસ્કૃતિક પ્રવૃત્તિઓ.)

All values are in percentage (%)

Response :- 1157

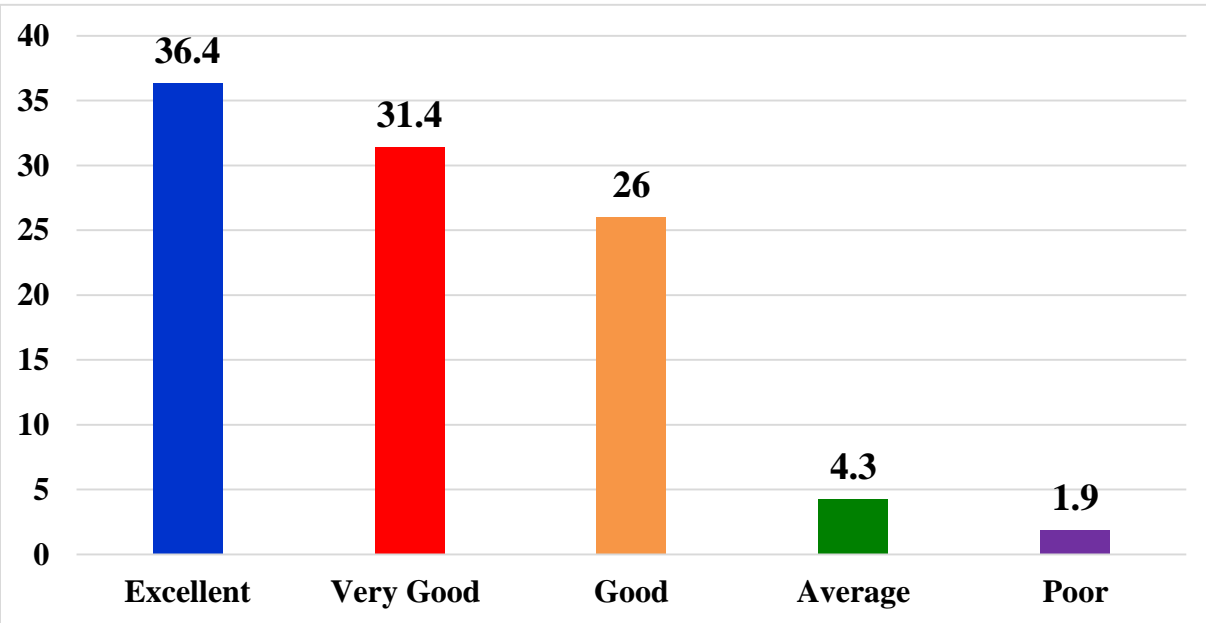
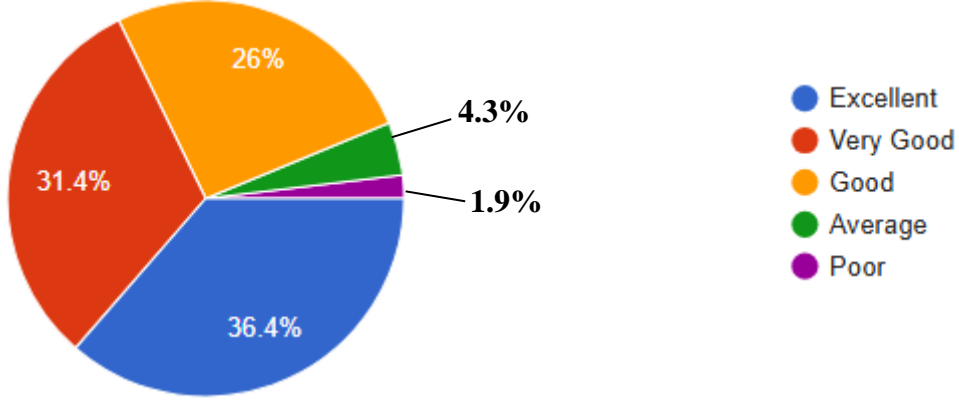


Ans	Total	Percentage
Excellent	426	36.8%
Very Good	330	28.5%
Good	306	26.4%
Average	63	5.4%
Poor	32	2.8%

6. Student's counseling activities and guidance. (વિદ્યાર્થીઓની કાઉન્સેલિંગ પ્રવૃત્તિઓ અને માર્ગદર્શન.)

All values are in percentage (%)

Response :- 1157

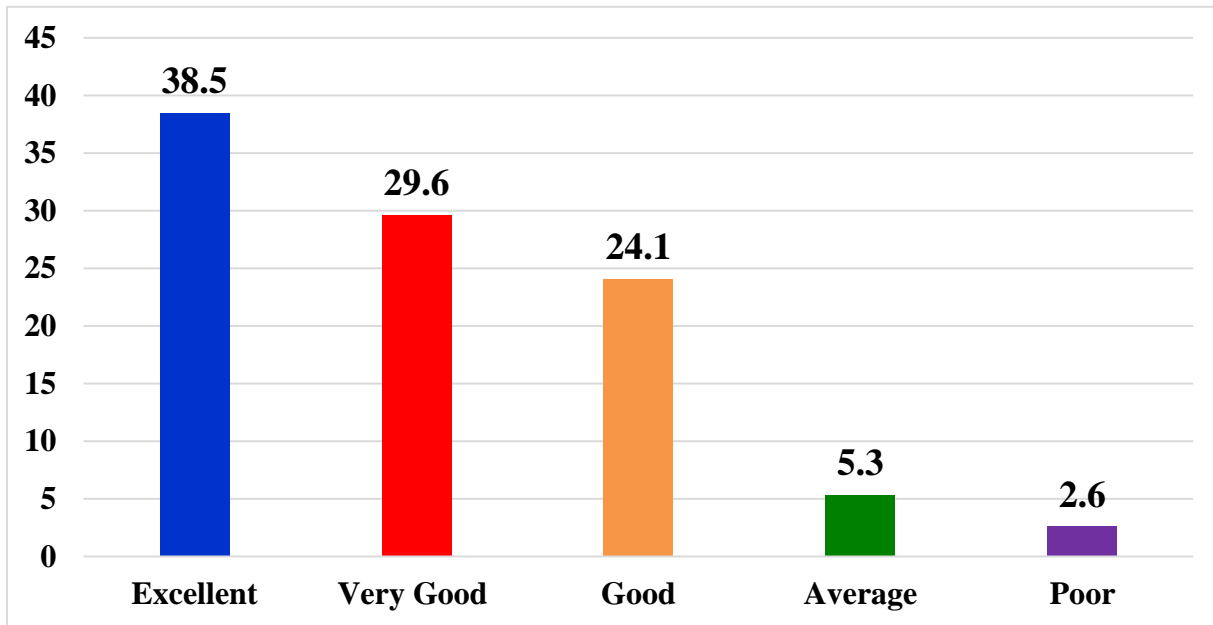
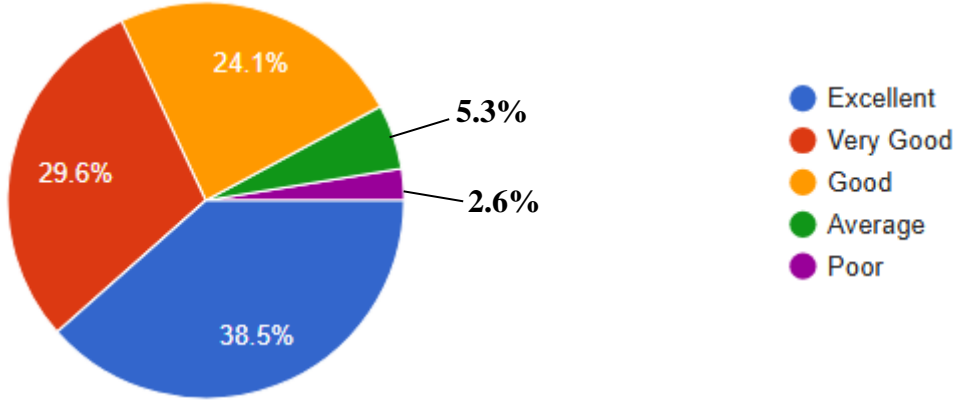


Ans	Total	Percentage
Excellent	421	36.4%
Very Good	363	31.4%
Good	301	26.0%
Average	50	4.3%
Poor	22	1.9%

7. Use of Information and communication technology in the college. (કોલેજમાં માહિતી અને સંચાર ટેકનોલોજીનો ઉપયોગ.)

All values are in percentage (%)

Response :- 1157



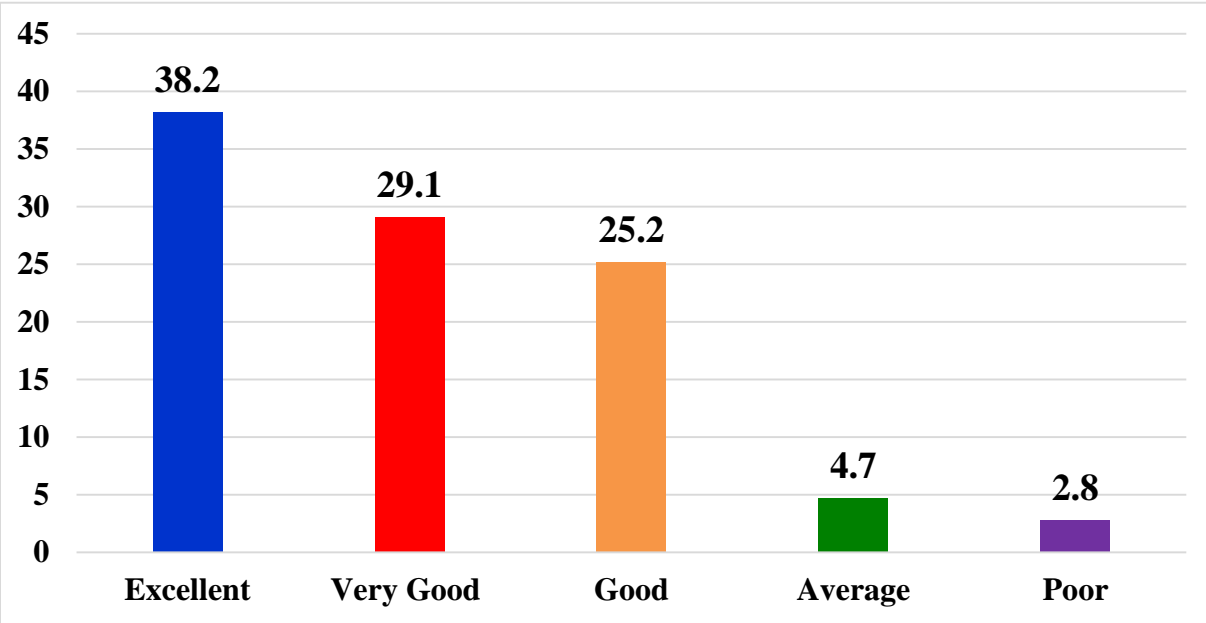
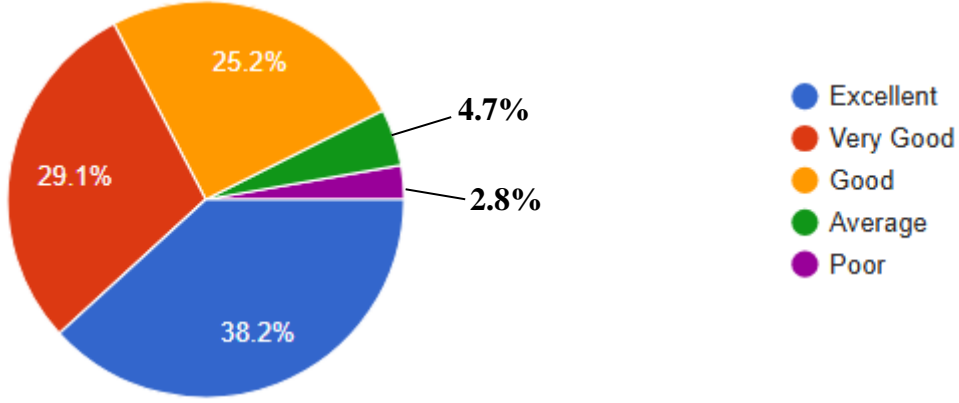
Ans	Total	Percentage
Excellent	445	38.5%
Very Good	342	29.6%
Good	279	24.1%
Average	61	5.3%
Poor	30	2.6%



8. Academic Discipline (i.e timely conduct of lectures, practicals and related activities) observed by the college. (કોલેજ દ્વારા અવલોકન કરાયેલ શૈક્ષણિક શિસ્ત (એટલે કે વ્યાખ્યાનો, પ્રેક્ટિકલ અને સંબંધિત પ્રવૃત્તિઓનું સમયસર આચરણ))

All values are in percentage (%)

Response :- 1157

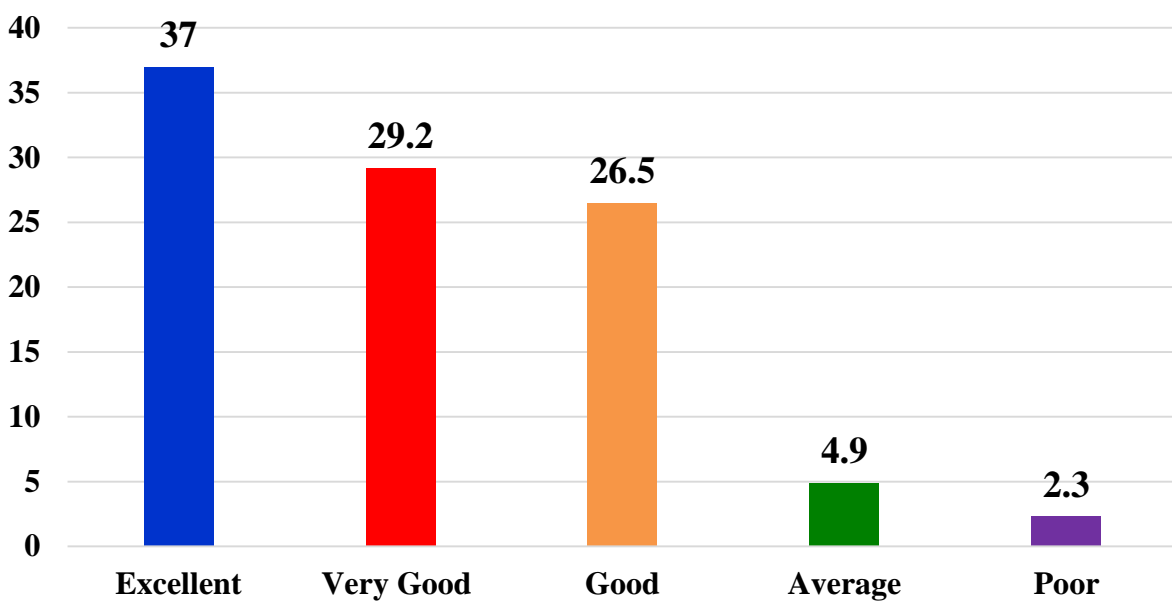
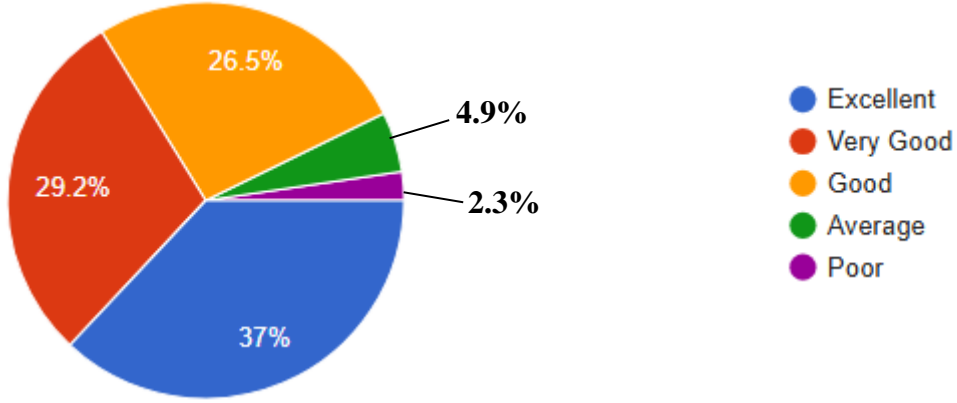


Ans	Total	Percentage
Excellent	442	38.2%
Very Good	337	29.1%
Good	292	25.2%
Average	54	4.7%
Poor	32	2.8%

9. Improvement in soft skills, knowledge, ethics, morality, observed by you in your ward while studying in college. (કોલેજમાં અભ્યાસ કરતી વખતે તમારા વોર્ડમાં તમે જોયેલી સોફ્ટ સ્કિલ, જ્ઞાન, નીતિશાસ્ત્ર, નૈતિકતામાં સુધારો.)

All values are in percentage (%)

Response :- 1157

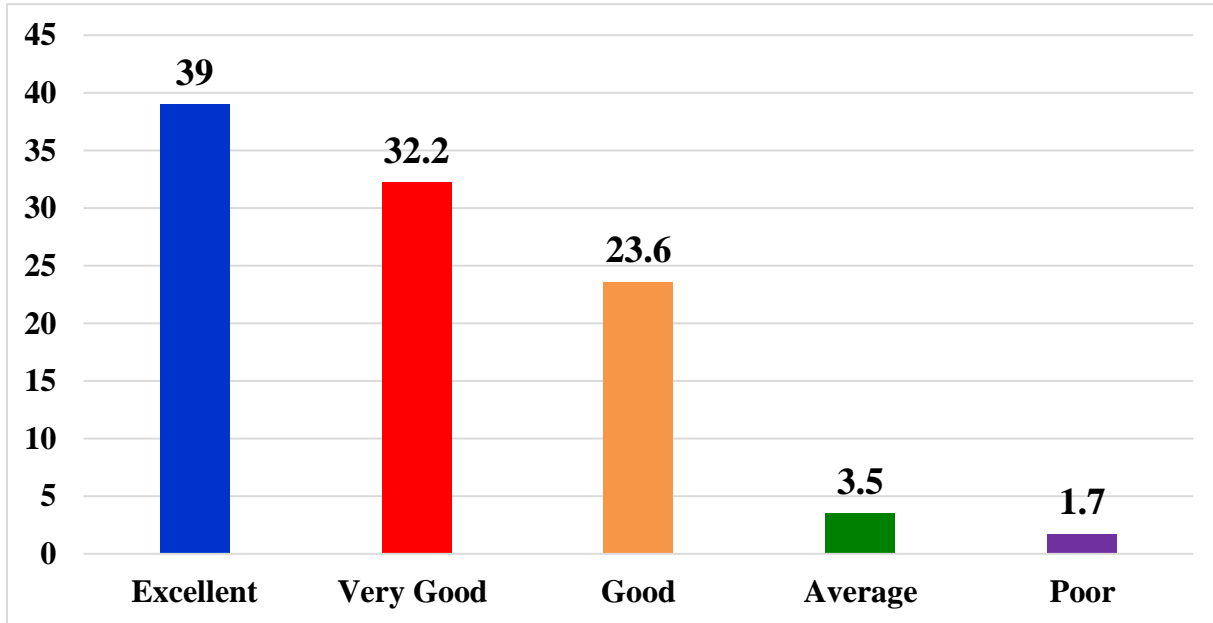
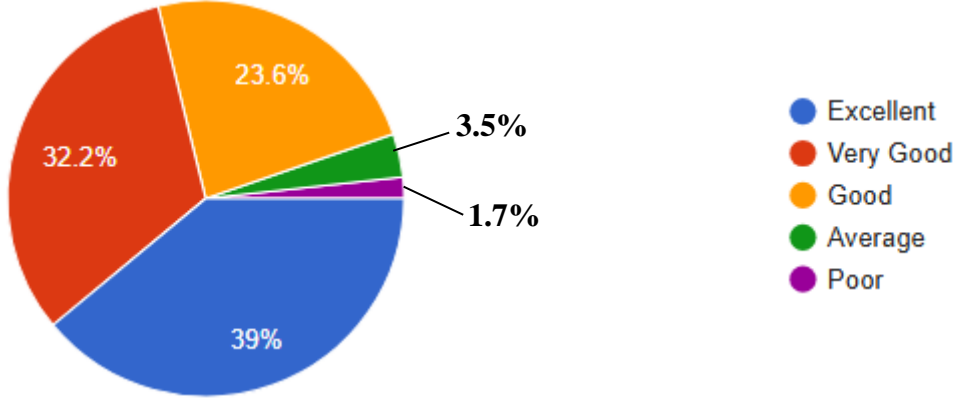


Ans	Total	Percentage
Excellent	428	37.0%
Very Good	338	29.2%
Good	307	26.5%
Average	57	4.9%
Poor	27	2.3%

**10. Examination system adopted by the college. (કોલેજ દ્વારા અપનાવવામાં આવેલ પરીક્ષા પદ્ધતિ.)**

All values are in percentage (%)

Response :- 1157

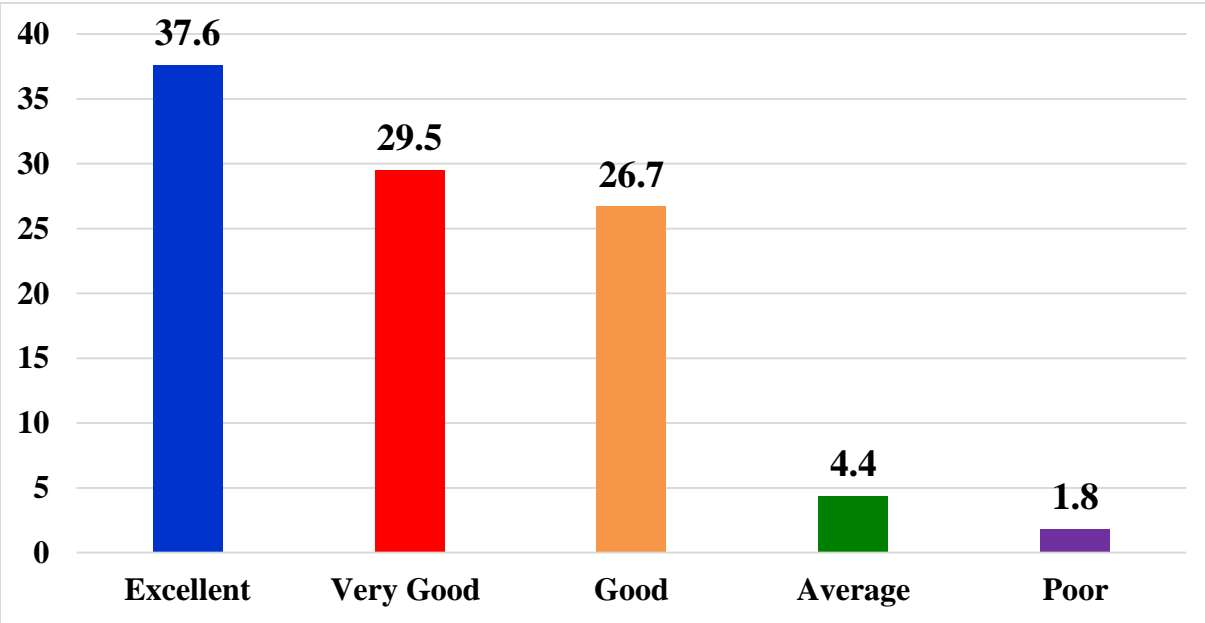
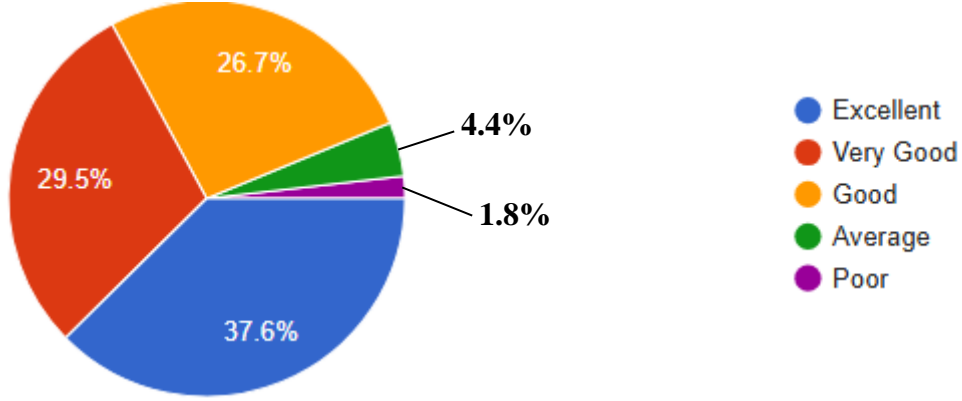


Ans	Total	Percentage
Excellent	451	39.0%
Very Good	372	32.2%
Good	273	23.6%
Average	41	3.5%
Poor	20	1.7%

## 11. Evaluation and Feedback mechanism. (મૂલ્યાંકન અને પ્રતિસાદ પદ્ધતિ)

All values are in percentage (%)

Response :- 1157

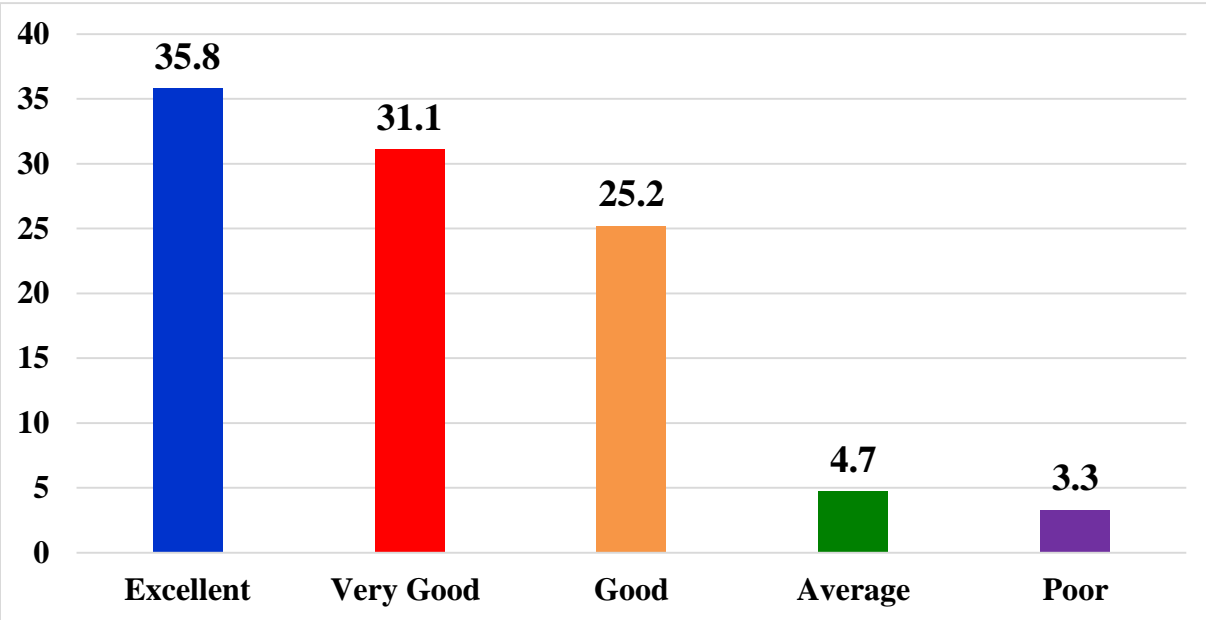
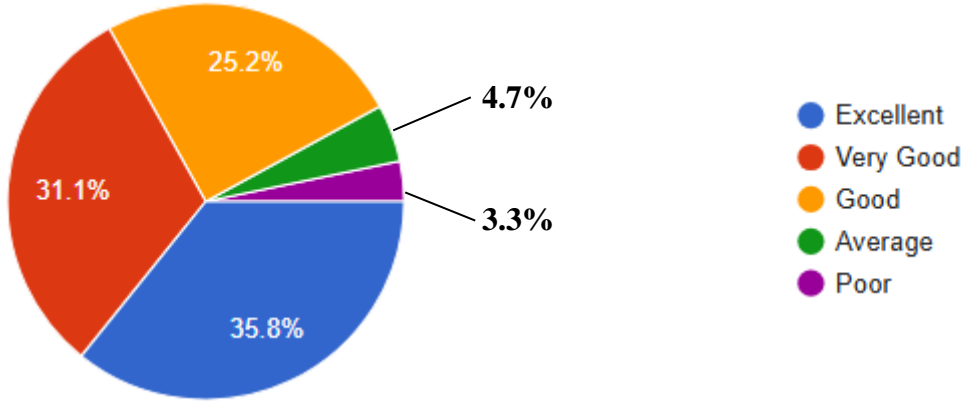


Ans	Total	Percentage
Excellent	435	37.6%
Very Good	341	29.5%
Good	309	26.7%
Average	51	4.4%
Poor	21	1.8%

**12. Guidance about Placements and Higher Progression (Further Studies). (પ્લેસમેન્ટ અને ઉચ્ચ પ્રગતિ (વધુ અભ્યાસ) વિશે માર્ગદર્શન.)**

All values are in percentage (%)

Response :- 1157



Ans	Total	Percentage
Excellent	414	35.8%
Very Good	360	31.1%
Good	291	25.2%
Average	54	4.7%
Poor	38	3.3%